



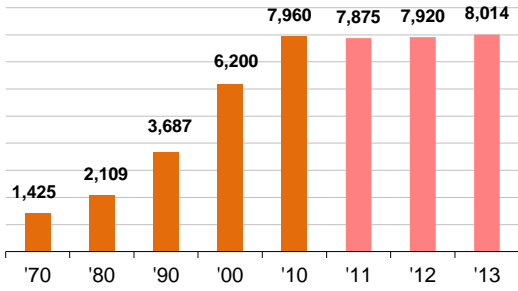
# CITY OF HAILEY

## Economic Profile

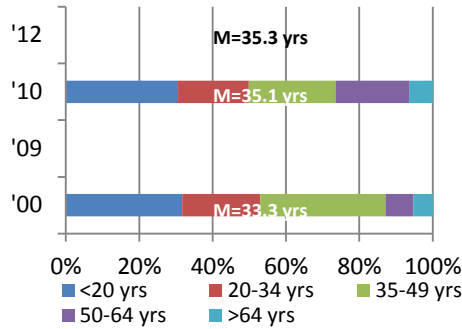
# 2013

### CITY DEMOGRAPHICS

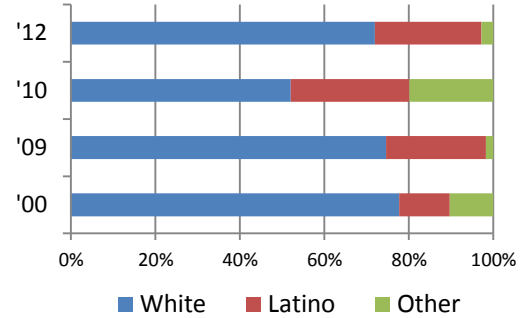
#### Population



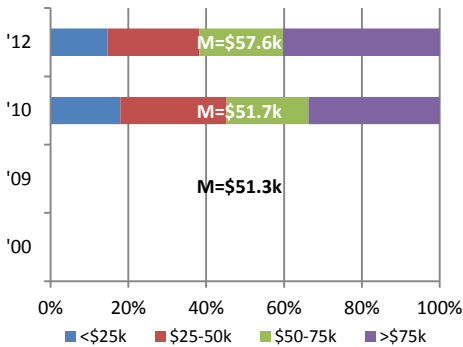
#### Age



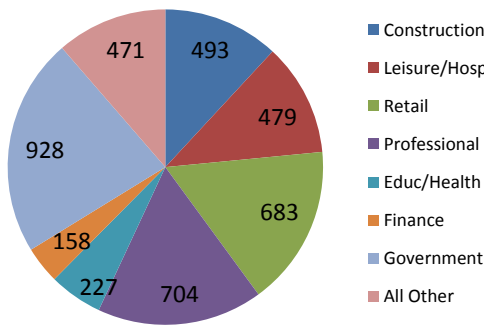
#### Race/Ethnicity



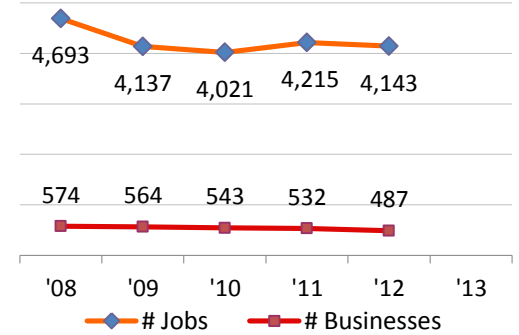
#### Household Income Distribution



#### Jobs by Industry Sector (2012)



#### Jobs & Businesses (2012 #)



Median HH Income (2102) \$

57,634

Total Employed:

4,143

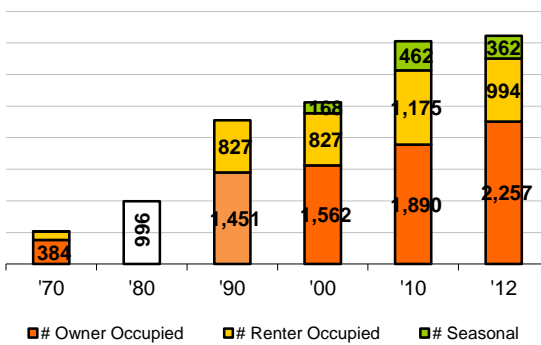
-12% chng '08-'12

BC Unemployment Rate:

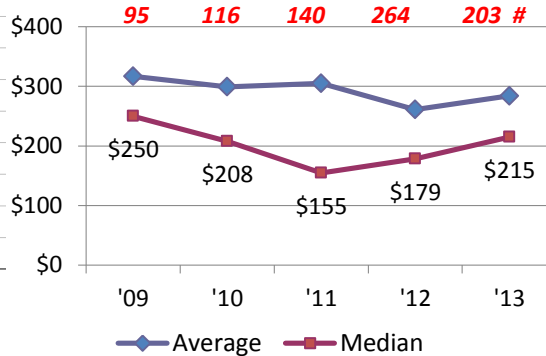
5.6%

### CITY HOUSING STOCK

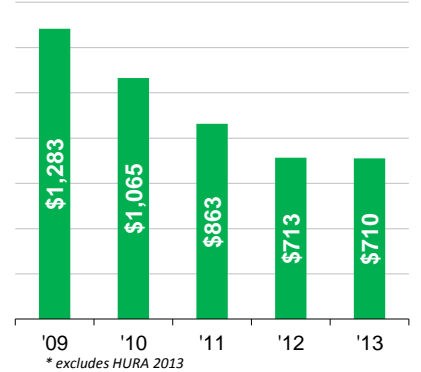
#### Housing Stock Utilization (# units)



#### Single Family Home Sales (\$000 & #)



#### Assessed Tax Values \* (\$m)



Total Housing Units ('12):

3,613

3-BR Rental/mo:

1,288

Assessed Residential Value (\$m):

\$464

Average Household Size ('12):

2.40

% change '12-'13:

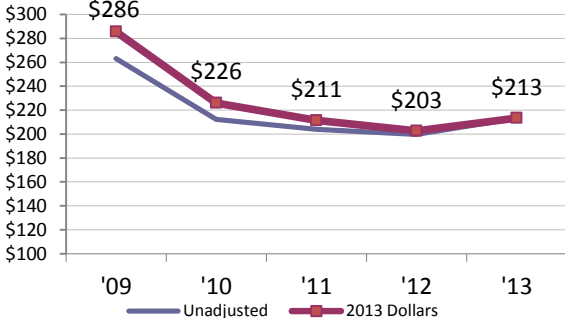
32%

Assessed Commercial Value (\$m):

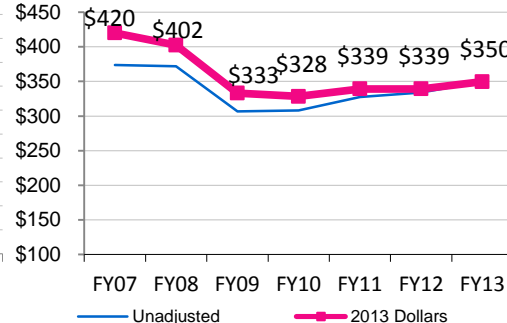
\$246

### CITY BUSINESS ACTIVITY

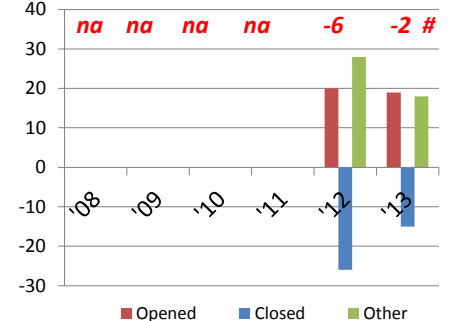
#### Reported Sales (\$m)



#### Local Options Tax (\$000)

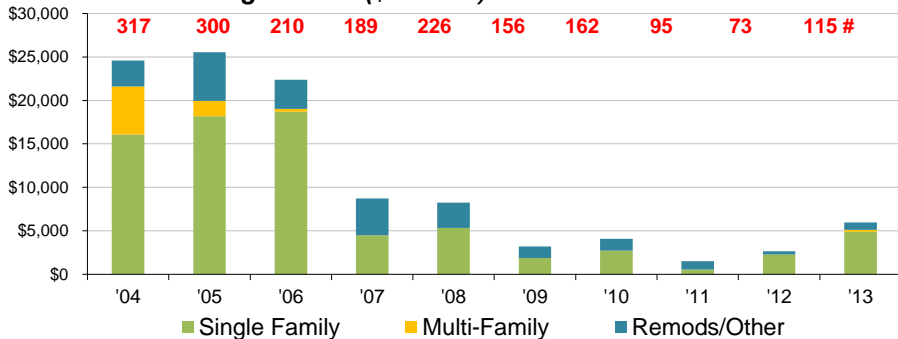


#### Business License Change (#cum)

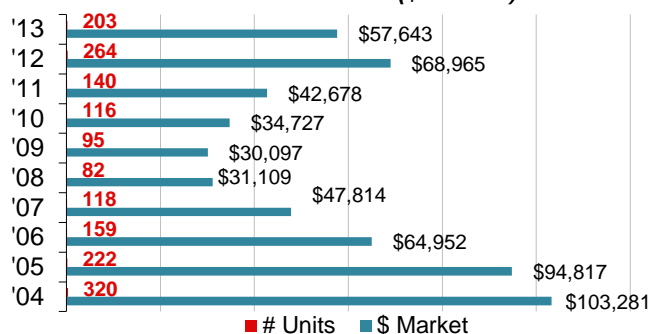


## CITY RESIDENTIAL ACTIVITY

### Residential Building Permits (\$000 & #)

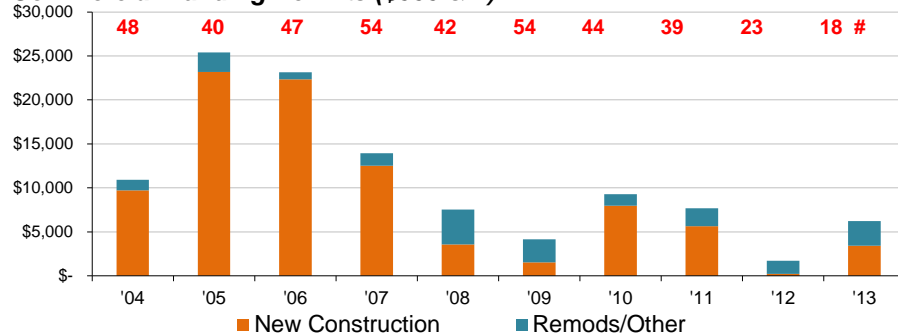


### Residential Sales Transactions (\$000 & #)

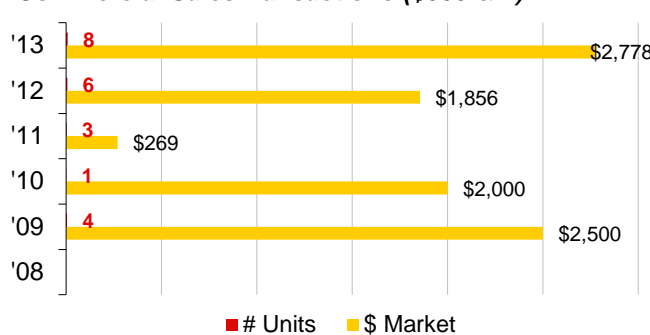


## CITY COMMERCIAL ACTIVITY

### Commercial Building Permits (\$000 & #)

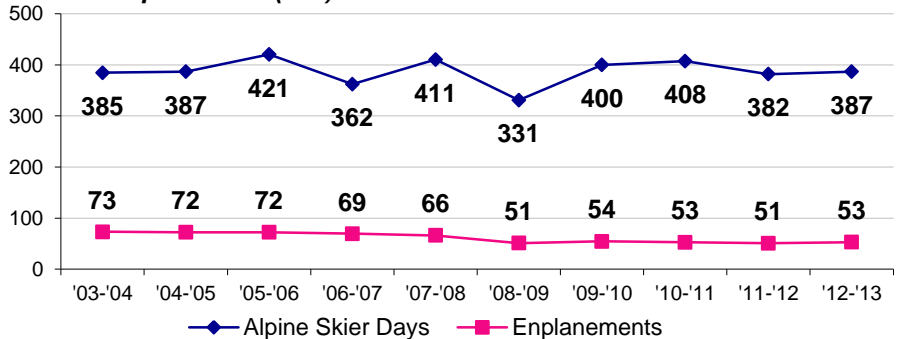


### Commercial Sales Transactions (\$000 & #)

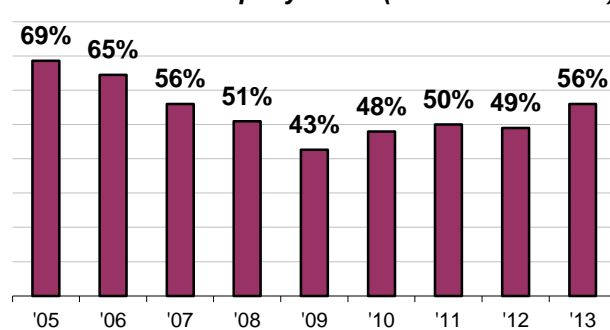


## CITY TOURISM MEASURES

### Skier & Airport Visits (000)

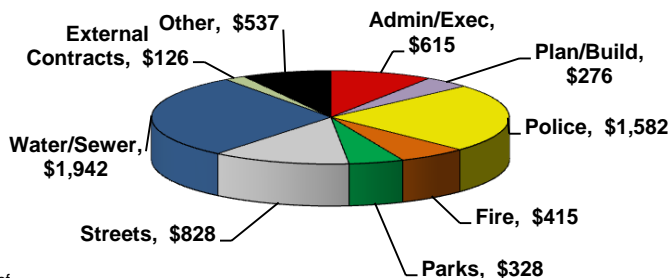


### Weekend Hotel Occupancy Rates (includes Bellevue)



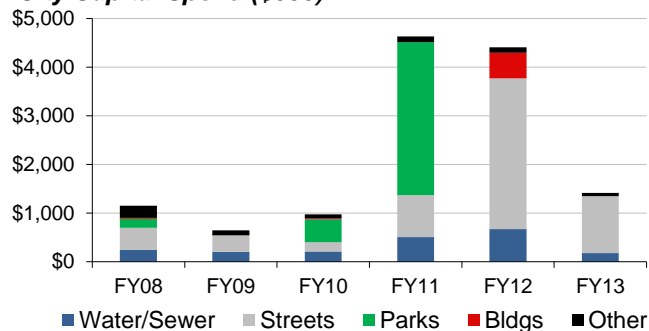
## CITY GOVERNMENT ACTIVITY \*

### City Revenue Spend FYE12 (\$6.6 million)



\* Includes share of Water & Sewer Districts

### City Capital Spend (\$000)



## OTHER STATISTICS

### FIVE YEAR TRENDS:

	2008	2013
Land Area (acres)	1,804	1,804
Property Tax Rate (\$ per mil)	\$5,321	\$10,070
Blaine Unemployment Rate	3.6%	5.6%
Largest Employers:	<ol style="list-style-type: none"> <li>1 Blaine County Schools</li> <li>2 Power Engineers</li> <li>3 Blaine County Government</li> <li>4 Albertson's</li> <li>5 Atkinson's Market</li> <li>6 City of Hailey</li> </ol>	

### RELATIVE COMPARISONS (2010):

	Blaine	Idaho	U.S.
Population Density (per square mile)	8	19	87
School District Spend (\$000 per Pupil)	\$ 16	\$ 7	\$ 10
Bachelors Degree or Higher (%)	43%	24%	28%
Mean travel time to work (minutes)	17	20	25
Residential Electrical Rates (\$/kWh)	\$ 0.06	\$ 0.07	\$ 0.12
Unemployment Rate (%)	8.9%	8.8%	9.6%
Serious Crime Rate (per 100,000)	3.0%	2.7%	5.2%
Per Capita Income (\$000)	\$ 55.1	\$ 32.1	\$ 40.2